

prepFAST PPO

Automated PPQ Metals Determination in High Purity Chemicals



Ultraclean automated sample introduction system with inline concentration of ultrapure chemicals for parts-per-quadrillion (ppq) level analysis.

Concentration Mode Detection Limits
in UPW (1000x Concentration Factor)

Elements	DL (ppq)	Elements	DL (ppq)
Li	0.02	Fe	0.3
B	9	Co	0.01
Na	0.6	Ni	0.07
Mg	0.2	Cu	0.07
Al	0.6	Zn	0.4
Si	240	Mo	0.3
K	0.4	Ag	0.05
Ca	0.3	Cd	0.06
Ti	0.2	Ba	0.04
Cr	0.4	W	0.4
Mn	0.07	Pb	0.05

Direct Analysis Mode:

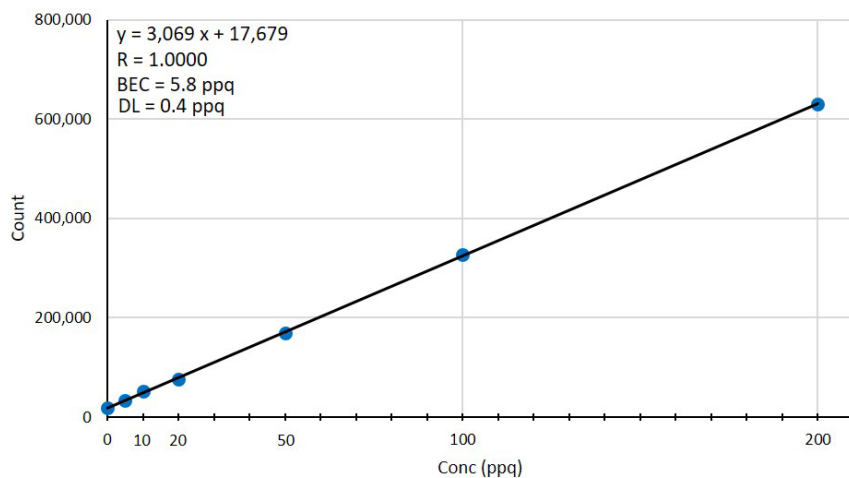
- General purpose for any sample matrix
- Sub-PPT detection limits
- Automated MSA calibration
- Automated inline dilution

Concentration Mode:

- Suitable for UPW, 30% H₂O₂, and IPA
- Sub-PPQ detection limits
- Removes difficult matrices such as IPA while recovering metals
- Removes impact of ICPMS interferences and backgrounds on results
- Amplified sensitivity compared to direct analysis
- Automated MSA calibration

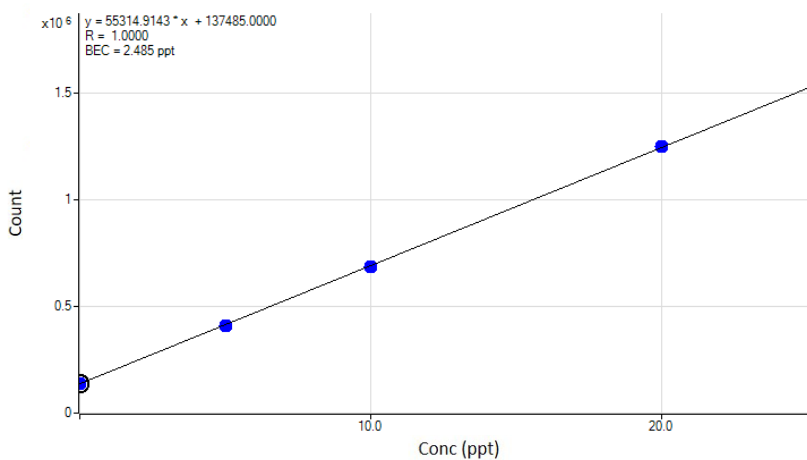
prepFAST PPQ Autocalibrations

39 -> 39 K



Calibration curve for K at 5, 10, 20, 50, 100, 200 PPQ in UPW (1000x concentration factor).

28 -> 44 Si



Calibration curve for Si at 5, 10, 20 PPT in UPW (1000x concentration factor).

